



SALES LAUNCH

SUPREME TENOR

APRIL 6th, 2023

HENRI SELMER PARIS, THE STANDARD FOR SAXOPHONES

Continuing the legacy of Adolphe Sax, the Henri SELMER Paris factory has accumulated 100 years of *savoir-faire* and excellence in the production of French-made saxophones.

Since the famous *Modèle 22*, over 800,000 instruments have been created in our workshops in Mantes-la-Ville, including iconic models that have shaped the sound of the saxophone.

The enduring spirit of innovation and the close relationship with saxophonists from around the world is illustrated every day, right down to the design of the instruments, created with musicians and for musicians.

Today, SELMER offers musicians the full range in the saxophone family, from the soprano to the bass, in a wide selection of finishes.



WHY THIS NEW INSTRUMENT?

The tenor saxophone is present in the classical repertoire, and notably in chamber music, where it plays an essential role within the saxophone quartet. It also expresses itself through several well-known orchestral solos (Bolero, Romeo and Juliet, etc.). Contemporary composers are increasingly featuring it in their work, but it is primarily through jazz that it has developed the richest history, and through which its most iconic figures have become known.

The name Supreme pays homage to John Coltrane (and to his album *A Love Supreme*), whose sound and music have marked history.

The *raison d'être* of the tenor Supreme is embodied in the desire to carry on this legacy. It has taken over 12 years to design the tenor Supreme, and to achieve the ambitious objective set from the beginning: to create the best tenor saxophone ever made by Henri SELMER Paris in terms of acoustics, mechanics, ergonomics and aesthetics.

Dozens of tenor players of all musical genres from around the world have participated in the various trials to define the many fundamental details which have given birth to the tenor Supreme: an instrument with strong ties to its past, conceived for the music of today and tomorrow.



OUR OBJECTIVES



- Create a tenor saxophone crafted with care down to the finest detail, positioning the Supreme as the most accomplished model ever made.
- Enrich the Supreme range by offering the alto and the tenor.
- Reaffirm Henri SELMER Paris's position as the leader in innovation, design and fabrication of high-end saxophones.
- Renew and elevate the discourse by situating it beyond musical genres and by freeing the creativity of every player.
- Cultivate musicians' desire to own a new SELMER saxophone.

THE INSTRUMENT

Pleasure and ease of play

After 100 years of saxophone innovation, conception and manufacturing, Henri SELMER Paris is redefining the modern identity of the tenor saxophone with the Supreme.

The creation of the Supreme embodies the culmination of an age-old *savoir-faire* combined with a perfect mastery of fabrication tools, all rising to meet the expectations of the *Maison SELMER*.

The tenor Supreme achieves the feat of surpassing the flexibility and sensation of lightness found in historic models and combining those features with the precision and exactness of pitch found in modern ones. It is both powerful and capable of infinite refinement. It allows for a an impressive power or a very expressive lyricism. Its dynamic possibilities go from a barely audible whisper to a wailing scream. The tenor Supreme defies the natural inertia inherent to the tenor, offering a real sensation of lightness from the moment it enters the musicians' hands, thanks a redistribution of its overall equilibrium and its compact ergonomics. This liberty manifests itself, above all, in the immense flexibility and suppleness of sound, previously unattainable in a tenor, which has been achieved with the new bore.

This new identity for the tenor Supreme is complemented by a creative, bold and innovative aesthetic that can be found in every detail of the instrument.

The refinement and care taken in its fabrication offer unparalleled pleasure and ease of play, making it a source of inspiration for rediscovering the tenor.



THE TENOR RANGE



Positioned at the high end of the range, the tenor Supreme embodies the ultimate achievement of SELMER *savoir-faire*.



OPTIMIZED PRODUCTION FOR MORE PRECISION

- More precise boring of the diameter of the neck entrance
- Three-dimensional manufacturing check
- Tone hole extruding machine for extruding by tone hole groups

All these elements allow for more homogeneity of fabrication, reducing acoustic differences between instruments, even if subtle differences still remain.



ACOUSTICS



- New bore in the neck, with increased entrance and exit diameters for more projection and a fuller sound.
- Modified tone holes diameters.
- Elongated bell for a more precisely pitched and generous lower register.
- Newly defined body vent.
- Reduced key diameter to “free” the tone holes and optimize the timbre.
- Reduction of the keywork course for increased finger speed.

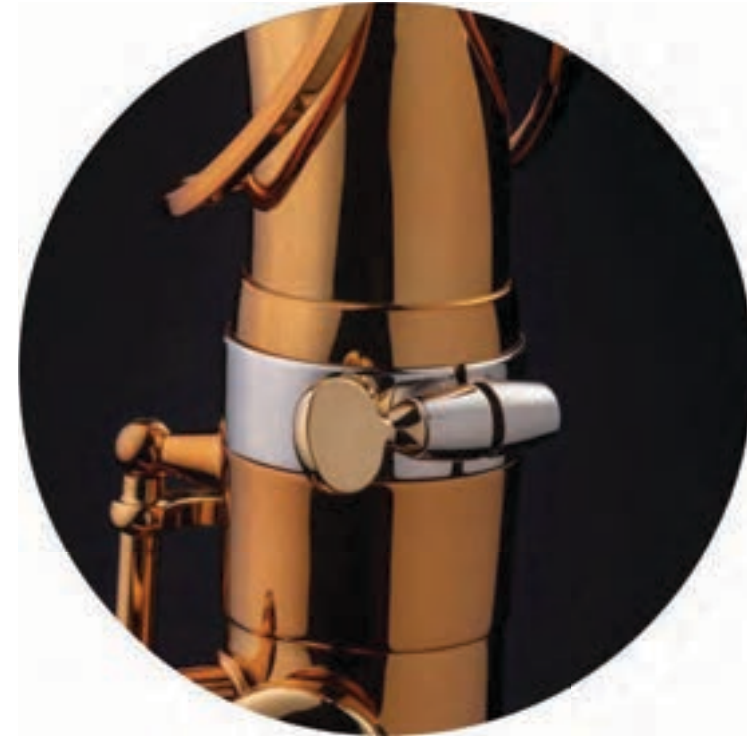
A UNIQUE sound thanks to PERFECT equilibrium

- ✓ Great projection power
- ✓ Unparalleled flexibility and ease of play
- ✓ Roundness combined with an immense richness of timbres
- ✓ Ideally distributed pitch precision

MECHANICS AND ERGONOMICS



3-point concentric clamp on the neck receiver for a better junction between the neck and the body, ensuring a better hold over time and avoiding deformation of the neck and the tenon.



Nickel silver tightening ring on the neck receiver, bringing density to this delicate area. Since it is not connected to the neck receiver, its position is adjustable.

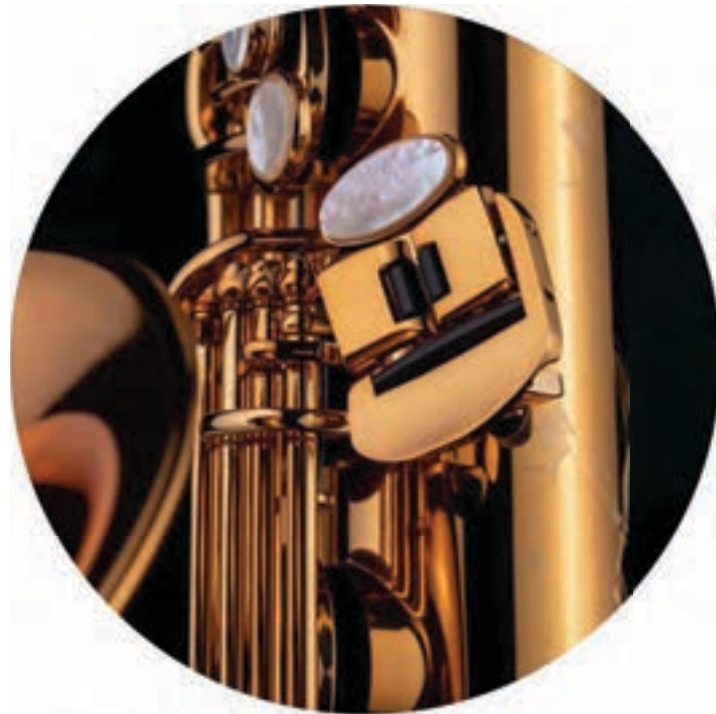


Direct adjustment arm between the right hand F# and F keys, allowing for finer, more reliable adjustment.



Octave key system with teflon supports to limit movement, noise and wear.

MECHANICS AND ERGONOMICS



Hinged toggle on left hand pinky finger keys allows for greater ease of movement from one key to another.



Repositioned strap ring for better overall equilibrium.



Redesign of side key forms and placements, facilitating transition from one to the other.

AND ALSO...

- Realignment of left hand mother-of-pearl heights, offering a more natural finger position.
- Optimized and more natural positioning of mother-of-pearl side F#.
- Use of rollers gives greater mechanical fluidity for the FX and the G#
- Repositioning of the B-flat mother-of-pearl pad cup.
- Raised D# and high F keys for quicker access.
- New, more accessible double F key.
- Repositioned thumb rest and thumb hook for better handling.
- Rebalancing of the springs for more fluid action.

AESTHETICS

The overall aesthetic of the Supreme has been carefully considered, evoking fluidity of play through its streamlined form and roundness through the softening of the angles. All key guards (Low B and B-flat, side F#, E-flat, C and flat guard) have been redesigned in harmony with the instrument and the bow reinforcement has been given a new design.

The engraving evokes a sense of universality. The genesis of sound is incarnated in an explosion mixing the floral motif - traditional in SELMER engraving - with cubic forms illustrating the structure of metal molecules. This unique combination of elements suggests the projection of air, movement, speed and life. A disc in the background evokes a planet, echoing this notion of infinite space.

The warm hue of the Dark Gold lacquer is reminiscent of the finish used since the 1940s.



INCLUDED ACCESSORIES

Supreme CASE

An exclusively designed case made especially for the Supreme by our partner, BAM. Although compact, it benefits from a large storage space and two detachable inside pockets. The straps allow for comfortable carrying on the back. Its shell in midnight blue ABS recalls the color of the “S” on the neck key.



CONCEPT MOUTHPIECE

Boasting an innovative and refined design, the Concept mouthpiece benefits from the latest in fabrication technology. Combining facility, richness of sound and great homogeneity across all parameters, the Concept is a model with high precision acoustics. It is accompanied by a matching mouthpiece cap and ligature.



INCLUDED ACCESSORIES

NECK STRAP

Neck strap in leather and foam. The gilded metal slider is marked in black with the Henri SELMER Paris logo.



METAL PLUG



SILK/MICROFIBRE CLOTH

Dual-material textile made in the form of the case: a microfiber side printed with the Supreme engraving motif and a silk side. It covers the instrument inside its case, offering maximum protection for your saxophone.



INCLUDED ACCESSORIES

BODY SWAB

With its round form and Supreme engraving motif, this microfiber swab has a thick, absorbent foam pad in the center for extra absorbancy.



NECK SWAB

This microfiber swab cloth is decorated with the Supreme engraving motif.



CORK GREASE

The grease stick is marked with the Supreme engraving pattern.



FINISHES

LACQUERED



SILVER-PLATED



GOLD-PLATED



BLACK



SOLID SILVER



BRUSHED



ANTIQUED LACQUER

OPTIONS

LYRA-HOLDER



NECKS



Lacquered



Silver-plated



Gold-plated



Black



Solid silver



Brushed



Antiqued Lacquered

TESTIMONIALS

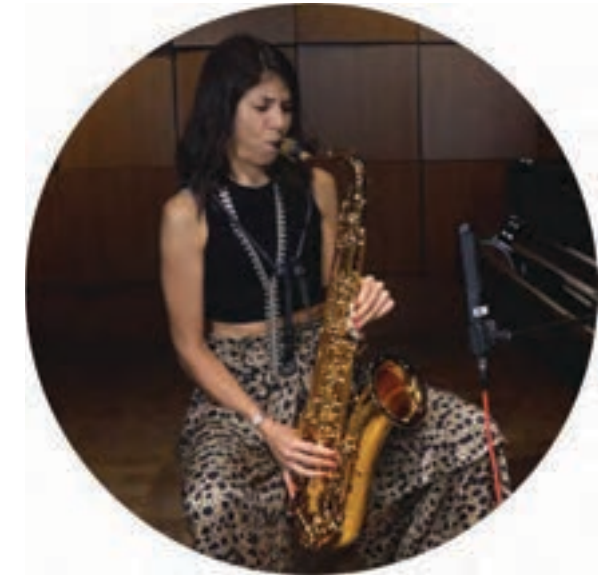
“The tenor Supreme has everything. What I seek from a horn is to have that palette, different textures. What strikes me the most with this tenor is how many different ways I can actually play it. Ergonomically I don't have to think, it's just there.”

DAVID SANCHEZ



“I am surprised how in tune and how responsive the tenor Supreme is. The first thing that I love is the consistency of the sound and the intonation. It feels very easy to play. It just sounds like what I am hearing in my head. The sound is very nice.”

MELISSA ALDANA



“The tenor Supreme has those things that are important to me. It has a nice bark when you lay into it, it doesn't feel like it fizzles out. It's similar to my old Mark VI or to my Super Balanced Action. I love the color of it.”

CHRIS POTTER



“I started playing the tenor Supreme and immediately the sound of the horn was amazing. It can play any kind of music in any range. It reminds me of the old horns.”

BRANFORD MARSALIS



TESTIMONIALS

"I have been playing SELMER saxophones my whole life. I have been waiting for Selmer to make a new horn that rivals the old instruments. I believe the tenor supreme has that. It plays better than my super balanced action. The tenor Supreme has a lot of power, with effortless feel in the keys, beautiful low hand, lot of thick core sound. It plays even in all the registers with a beautiful tone."

RAVI COLTRANE



"The Tenor Supreme plays great. It plays as good or even better than a lot of the vintage horns that I have tried. It's dark and bright at the same time. It has a fullness."

RICK MARGITZA



"The tenor Supreme is so beautiful, so balanced. It has this incredible projection. Thank you for making this beautiful horn!"

ELI DEGIBRI



SUMIKA TSUJIMOTO



TESTIMONIALS

"The tenor Supreme is an extraordinary instrument... it surpasses the historic models."

IRVING ACAO



"I've only ever blown into a tenor other than my Mark VI on two occasions, and to have that same incredible sensation of breadth and grain, it was with an old balance and the Supreme. You only have to blow into it to make the ideas come. I am absolutely seduced by this instrument."

GUILLAUME PERRET



"The tenor Supreme corresponds completely to my idea of a tenor: an instrument that works perfectly and immediately. No need for fingering correction, its suppleness allows you to easily play on pitch. It's a tenor that allows you to play more as a soloist."

NAHIKARI OLORIZ



"The tenor Supreme is magnificent. Visually, already, it resonates! It gives me the possibility to explore hidden corners of the tenor saxophone that I didn't know existed and inspires me to develop my playing."

STÉPHANE GUILLAUME





IN SUMMARY

“ Why choose the tenor Supreme ? ”

- ✓ Immense ease of emission and play**
- ✓ Great flexibility of timbre suited to all playing styles**
- ✓ Unparalleled accuracy of pitch for a tenor saxophone**
- ✓ Great projection power**
- ✓ Optimized ergonomics**
- ✓ Particular care in design**
- ✓ Unparalleled manufacturing precision**

QUESTIONS & ANSWERS

For what pitch was the Supreme designed?

The Supreme was designed to be played between 440 Hz and 442 Hz.

What is the length of the warranty?

Like all Henri SELMER Paris saxophones, the Supreme comes with a two-year warranty

.

Do you plan to produce this model for other saxophones (soprano, baritone, etc.)?

Beyond the alto and tenor, we plan to extend the Supreme range to the soprano and baritone.

Why did you choose the name "Supreme"?

To position this model as the most accomplished of its kind. It's also a nod to the iconic album by John Coltrane, *A love Supreme*.

Was this saxophone conceived for a specific musical aesthetic?

The qualities of the Supreme make it an instrument for any profile of saxophonist, whatever their musical aesthetic.

TECHNICAL CHARACTERISTICS

- Key: B-flat
- Range: Low B-flat / high F#
- Metal thumb rests (right hand, left hand)
- Neck receiver with 3-point concentric clamp
- Mobile tightening ring in nickel silver
- Left hand pinky finger keys with hinged toggle
- Right hand F#- F adjusting arm
- Special Supreme Engraving
- Leather pads with rivet-free metal resonators



OUTFIT Options

Supreme TENOR SAXOPHONE - **GLOBAL LAUNCH APRIL 6th, 2023**

SKU Name	UPC	Description
94DL	648023301812	Lacquered
Coming Soon	-	Silver plated
Coming Soon	-	Gold plated
Coming Soon	-	Black
Coming Soon	-	Solid silver
Coming Soon	-	Brushed
Coming Soon	-	Antiqued lacquer



Spread the word... Spread



!

#SelmerSupreme

#SelmerSaxophones

#HenriSelmerParis

#YoullPlayBetterWithaSelmer

